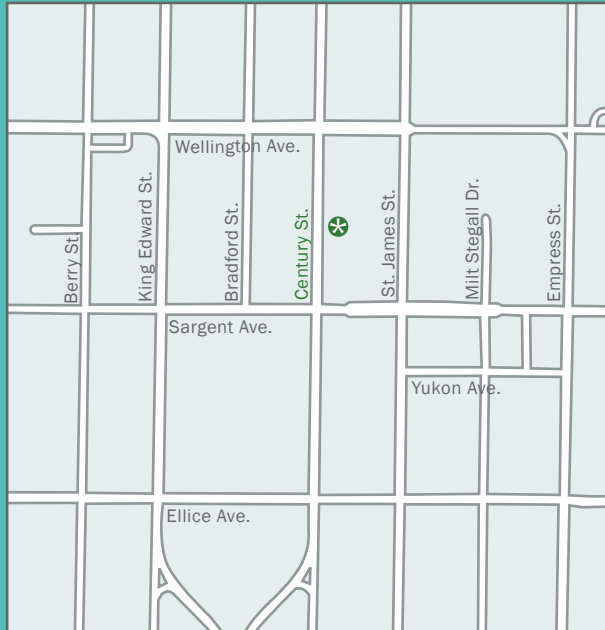




Being unprepared for hazardous spills can cause **costly clean ups** and **damage** to the environment. When contaminants enter drainage systems, the problem spreads.

Have your drains ready with **Drain Guards** from MEP Environmental!



**MEP**  
ENVIRONMENTAL

**P:** (204) 632.4118  
**T:** 1.877.632.4118  
**W:** <http://mepenvironmental.com>

725 Century St.  
Winnipeg, MB  
R3H 0M2

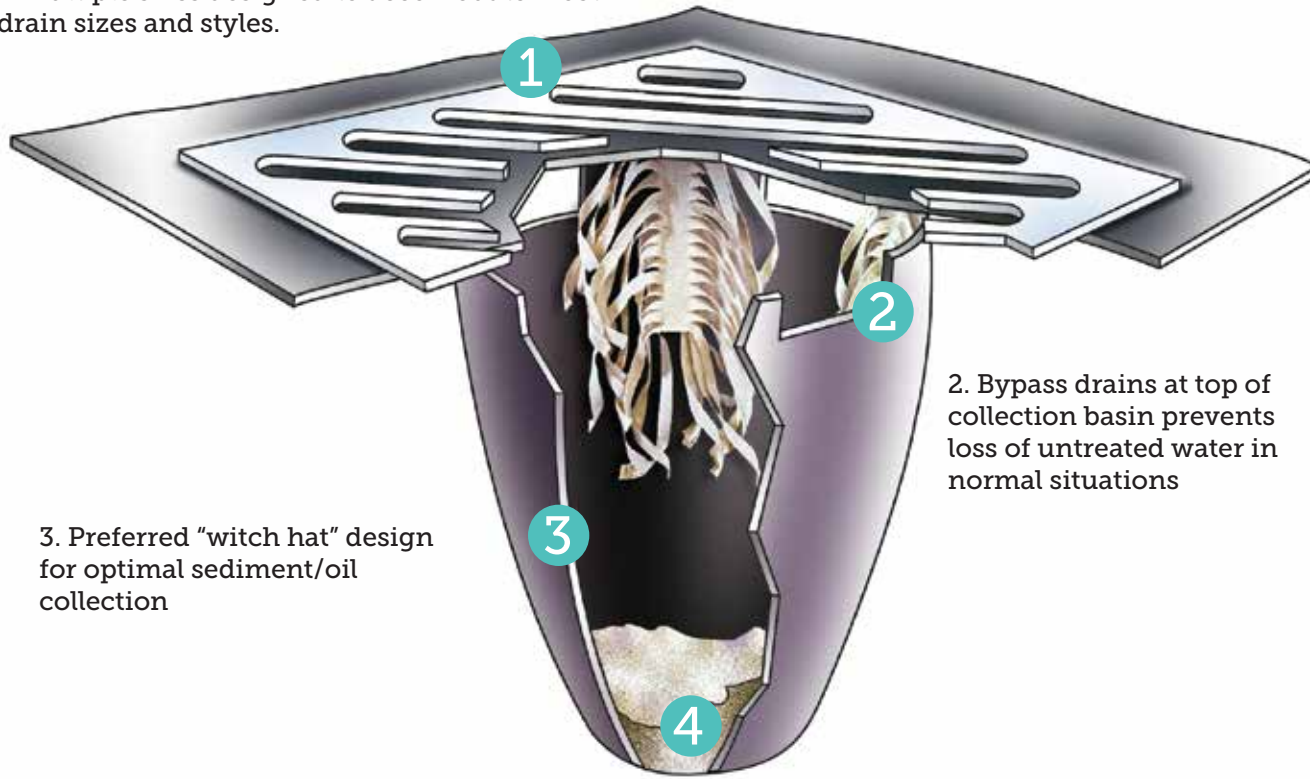
PROTECT THE  
**PLANET**  
MANAGE YOUR  
**LIABILITY**



**MEP**  
ENVIRONMENTAL

# DRAIN GUARD

1. Multiple sizes designed to accommodate most drain sizes and styles.



2. Bypass drains at top of collection basin prevents loss of untreated water in normal situations

3. Preferred "witch hat" design for optimal sediment/oil collection

4. Filtering material allows water through but collects 80% + of contaminants



(204) 632.4118

mepenvironmental.com

## HELP PROTECT OUR LAKES AND RIVERS

Stormwater pollution has become a major concern both locally and on a national level. **MEP-Drain Guards** remove contaminants from stormwater before it can become a problem in the water system.

*Exceeds 80% sediment removal efficiency*

**Designed for practical use in:**

*Industrial Facilities* - keep oil and other contaminants from entering storm drains.

*Construction Sites* - capture eroded soil and wind-blown debris.

*Parking Lots, "Drive-Up" Retail Facilities* - selected geotextiles collect oil, fuel and other contaminants that drip from cars.

### Type

48 x 36"

48 x 36" Plus

60" x 60"

60 x 60" plus

Trash/Debris

### Performance

**Oil:** Up to .87 gallons (3.5 L)  
**Sediment:** Up to 40 lbs. (18 kg)

**Oil:** Up to 1.38 gallons (5 L)  
**Sediment:** Up to 40 lbs. (18 kg)

**Oil:** Up to 1.55 gallons (5.9 L)  
**Sediment:** Up to 40 lbs. (18 kg)

**Oil:** Up to 2.06 gallons (7.8 L)  
**Sediment:** Up to 40 lbs. (18 kg)

**1 cu. ft. (28 L) - before reaching bypass ports.**